

Installation & Operation User Guide

Luxnur LN-STA LED Street Light Installation Manual

LED

Roadway Lighting

LN-STA

100W | 150W | 200 W | 240W



LUXNUR

"Illuminating Tomorrow"

Mede In Malaysia

Safety Precautions Installation



This symbol is intended to remind the user the presence of actions and operation that may cause danger. Please read instructions carefully and follow the instructions to avoid any danger.



This symbol is intended to represent precautions that the user should follow to prevent danger.



WARNING

Serious injury might result if the following precautions are not followed.



- The installation should be performed by certified workers under the relevant regulations of end user's country / region.
- Never modify or disassemble LED lighting arbitrarily because it can cause serious accidents.
- Never use any input power except the listed rated voltage. If not, it can cause serious accidents.



- Before installation, shut off the power supply and verify it is de-powered using a measuring instrument.
- The wiring should be insulated under end user's respective region's Electric Installations Standards.
- Do not install in a wet environment



CAUTION

The user may be injured or there would be property damage if the instructions below are not followed.



- Do not forcefully pull on AC/DC lines when wiring up the lighting. (It causes the wires to snap.)
- Do not use this product for any purposes other than what's specified. The manufacturer or sellers are not responsible for breakdowns or accidents caused by its improper use.



- When connecting the wires, use proper connection terminals depending on the site of installation.
- Do not install in a wet environment.
- Make sure to ground fixture by contacting it to metals around it to prevent damage by static.
- The product may be damaged if static is not removed.
- During the operation, be careful not to disconnect the wires.
- Make sure the grounding is performed under Electricity Standards.
- Using it for any voltage other than specified can cause failure or fire.
- Improper installation or disassembly causes a deformation or breakdown of the product.
- Consider proper protection devices, such as circuit breakers, fuses, switches, etc. for safety precautions.
- Do not install in an environment with excessive vibration.
- In any event, do not store / install in a contaminated place.
- Changes or modifications not expressly approved by the manufacturer could void the user's authority to operate the equipment.

SCOPE OVERVIEW :

This manual describes how to compose, install, and operate LED streetlamps.

LED STREETLIGHT APPARATUS

A streetlight is a light that is installed on the side of least four-lane roads to improve traffic safety of vehicles and civilians as well as traffic efficiency.

USAGE

This is a traffic safety facility not only for expressways, streets, parking lots, and industrial facilities, but also for the safety on motorways or sidewalks. It is roughly divided into road lamps, sidewalk lamps, overbridge lamps, and high-mast lightings. For Roads ME-1, ME-2, ME-3, ME-4, The shape varies with the road feature and the beauty concept of your city to give you a lot of choices.

The LUXNUR product lineup is 100W, 150W, 200W and 200W, all luminaire are proud of their high lamp efficiency over 145 lm/W. The lamp efficiencies are 13500 lm, 19,500 lm, 28,000 lm and 32,000 lm, respectively. The light distribution type is diversified. It supports Type II and Type III, to enable streetlamp installation in all environments.

LUMILED LED MODULE

LUXNUR LN-STA adopted LUMILED 3030 2D LED module, it offers high efficacy, long lifespan, compactness, uniform lighting, temperature stability, versatility in applications, eco-friendliness, dimmability, durability, and instant illumination, making it a top choice for efficient and consistent lighting.

INSTALLED SPD

Luxnure Street lights with integrated 20kA SPD offer enhanced protection against voltage surges, ensuring longer lifespan, consistent performance, and improved safety.

MAX WELL XLG – DRIVER

The MAX WELL XLG driver is designed to efficiently power and regulate LED lighting systems, ensuring consistent light output, energy savings, a longer operational life for LEDs, and enhanced performance in varying conditions.

TOOL-FREE OPENING

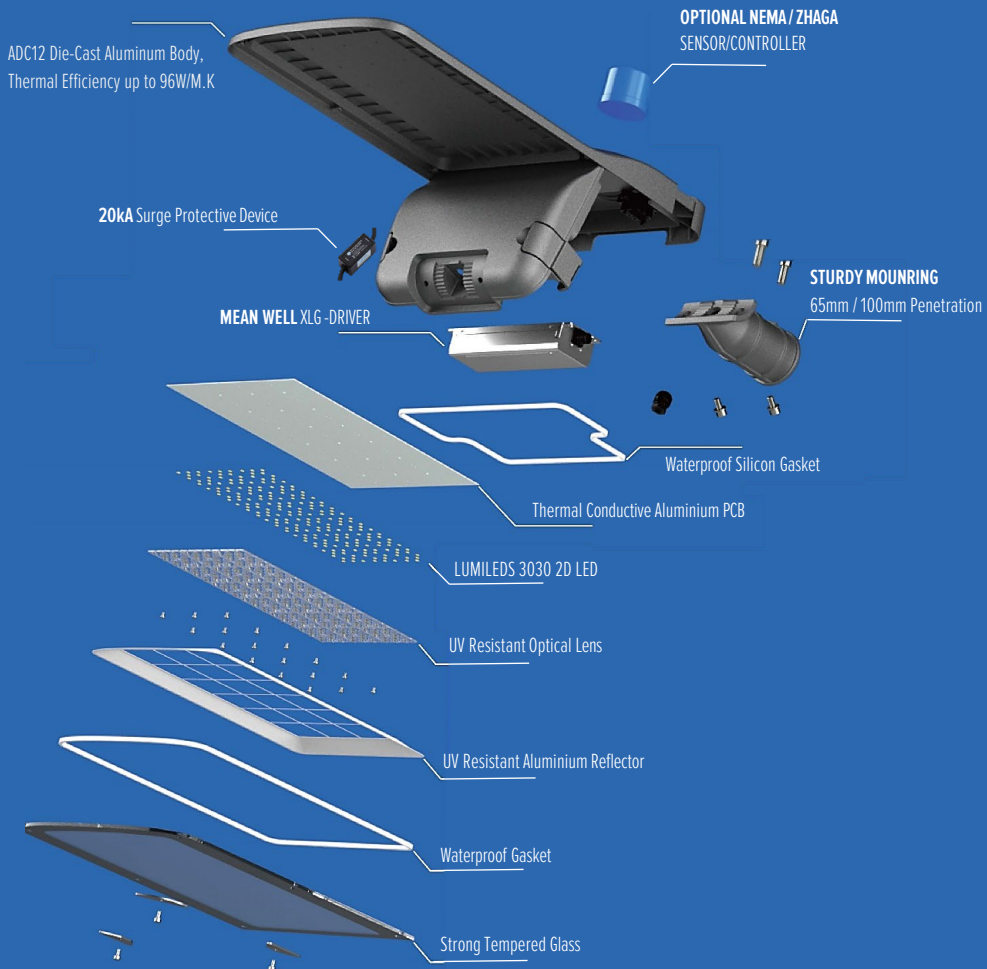
LUXNUR LN-STA adopted the Locking Latch type to the locking device in the enclosure part to open or close the enclosure without any tool when you are installing the Lamp. In addition, the internal wiring is easy to connect using WAGO Connector for more comfortable installation and maintenance.

BRAND	LUXNUR LN_STA
POWER	100W100W, 150W, 200W , 240W
WORKING ENVIRONMENT TEMPERATURE	-35° C to 50°C
MOUNTING HIGHT:	8 mtr to 13 mtr
IP GRADE:	IP66

PRODUCT	POWER	VOLTAGE RANGE	PRODUCT DIMENSION	NET WEIGHT
LN-STA100	100W	AC 210-240 ~V	610*245*99mm	4.3kgs
LN-STA150	150W	AC 210-240 ~V	661*245*99mm	5.0kgs
LN-STA200	200W	AC 210-240 ~V	712*300*99mm	6.3kgs
LN-STA240	240W	AC 210-240 ~V	712*300*99mm	6.3kgs

CASING	ADC12 Die-Cast Aluminium
DRIVER	MEAN WELL XLG –XXX - H
SURGE PROTECTION DEVICE	20 kA - ZP LSP20- PR
LED MODULE	LUMILEDS – LUXEON 3030 2D Line
CONNECTOR	WAGO Connector
HEAT RESISTANT WIRE	0.5 Mtr

MODEL	LN-STA-100	LN-STA-150	LN-STA-200	LN-STA-240
INPUT	AC 210-240~V			
FREQUENCY (HZ)	50/60 Hz			
POWER (W)	100 W	150 W	200 W	240 W
POWER FACTOR	PF 0.98, 0.51 A	PF 0.98, 0.64 A	PF 0.98, 0.84 A	PF 0.98, 1.00 A
LM (± 10%)	14000	20000	28000	32000
LM/W	140 -150 lm/W			
CRI	>70			
CCT	3000K			
OPTICS	TYPE-3 (80° * 150°)		and	TYPE-2 (70° * 150°)
SURGE PROTECTION	20kA			
IP	IP66			
IK	IK08			
AMBIENT TEMP	-40°C To 70°C			
STORAGE TEMP	-40°C To 60°C			
HUMIDITY	10% -95% RH			
MOUNTING HIGHT	8 to 10 mtr	8 to 13 mtr	10 to 15 mtr	10 to 15 mtr
WIND AREA	0.15 m2	0.15 m2	0.20 m2	0.20 m2
WARRANTY	5 Years			



ELECTROTHERMAL SEPRATION DESIGN



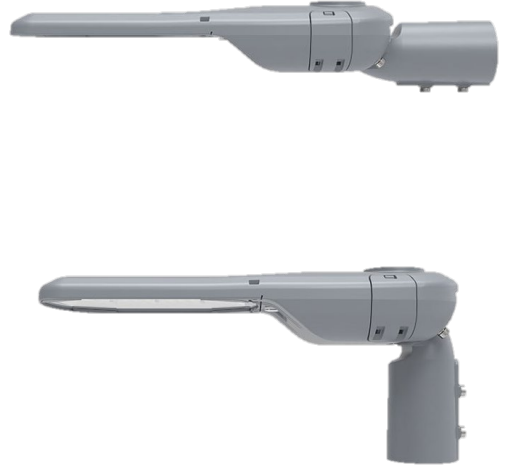
Product View



FRONT



BACK



SIDE

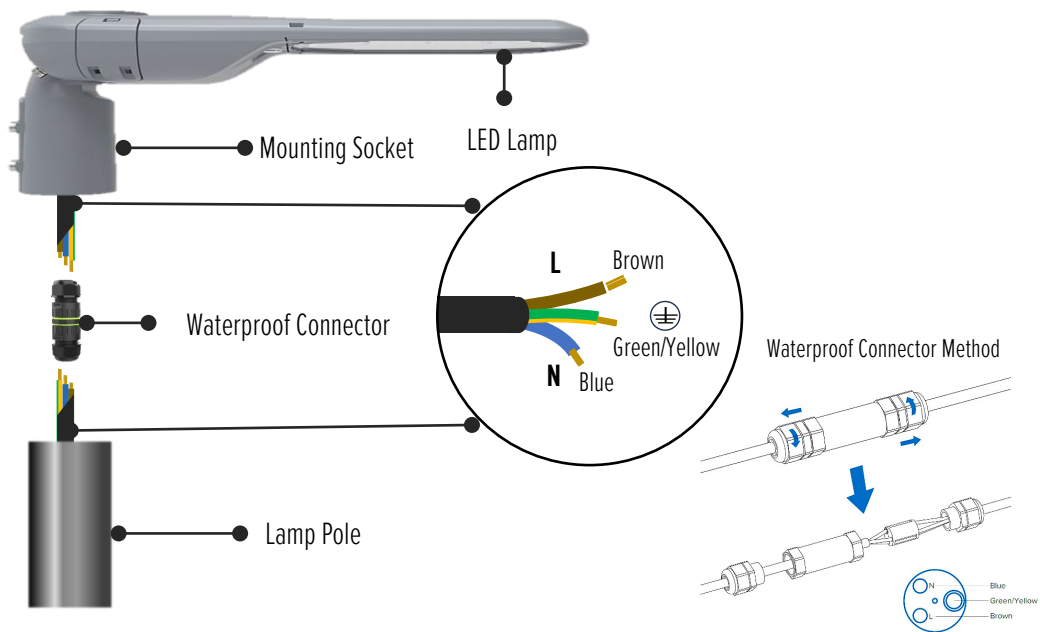
VERTICAL INSTALLATION



HORIZONTAL INSTALLATION



Product Installation



When connecting wires using a waterproof connector, it's essential to follow these steps to ensure a secure and water-resistant connection:

1.Preparation:

1. Ensure that the power source is turned off before starting.
2. Strip the insulation from the ends of the wires you intend to connect. Usually, 1/2 inch to 3/4 inch
3. Choose the right size of waterproof connector for the wire gauge you're working with.

2.Matching Colors:

1. Match wires according to their color codes. Typically, standard color codes are:
 1. Brown to Brown: Hot wire connection
 2. Green/Yellow to Green/Yellow : Ground wire connection
 3. Blue to Blue: Neutral wire connection

Note: Color codes might vary depending on your location or the specific application. Always refer to any provided instructions or local electrical codes.

3.Connecting:

1. Remove the nuts on the waterproof case and takeout the connecting terminal.
2. Use a slotted screwdriver to loosen the screws and connect the matching Colors wires. Tighten the screws to secure the wires.
3. Place the connecting terminal back into the waterproof case and tighten the nuts..

4.Sealing:

1. Some waterproof connectors come with gasket screw.
2. Ensuring the Screw tighten according to manufactures specification, making it water-resistant.

5.Testing:

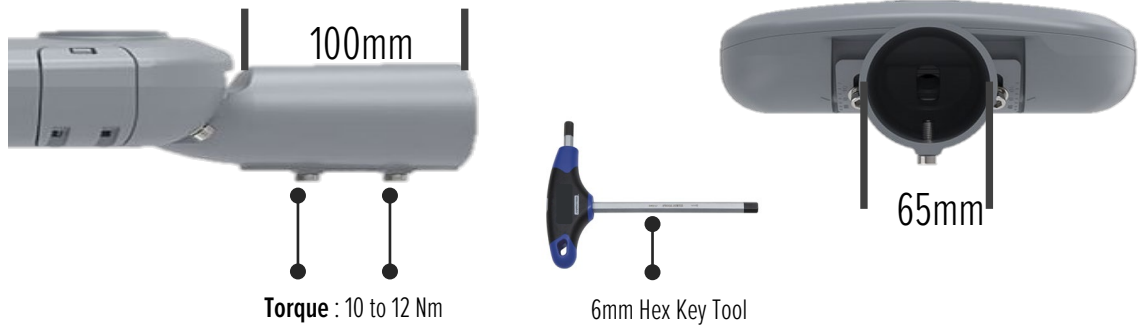
1. Once all connections are made and sealed, turn the power source back on.
2. Test the connection to ensure everything is working correctly.



Safety First:

Always use connectors rated for your specific application.

Remember, when working with electricity, always prioritize safety. Ensure you're using the right tools and equipment, and if in doubt, it's always best to consult with an expert or professional.



1. Determine Mounting Orientation:

The lamp can be fixed to the lamp pole either vertically or horizontally.

2. Confirm Measurements:

The lamp's spigot should have a 65mm inner diameter.

Ensure the pole's penetrating length is compatible at 100mm.

3. Positioning the Lamp:

Align the lamp onto the pole based on your chosen orientation.

4. Securing the Lamp:

Using a 6mm hex key tool, fasten the screw to the lamp.

Adhere to the torque specifications: Tighten the screw between 10 to 12 Nm.

5. Final Inspection:

Double-check the lamp's stability on the pole.

Ensure the screw is tightened correctly without over-torquing.



Safety Reminder: Always switch off any power sources before mounting the lamp. If there are uncertainties about any step, it's best to consult a professional.

1. Determine Desired Angle:

The lamp's angle can be adjusted to your requirement, within a range of ± 15 degrees.

2. Adjusting the Angle:

Using a 6mm hex key tool, slightly loosen the screw holding the angle in place.

Manually adjust the lamp to your desired angle, ensuring it's within the specified range.

3. Securing the Angle:

Once the desired angle is achieved, use the 6mm hex key tool to tighten the screw.

Ensure the screw is tightened to a torque of 10 to 12 Nm.

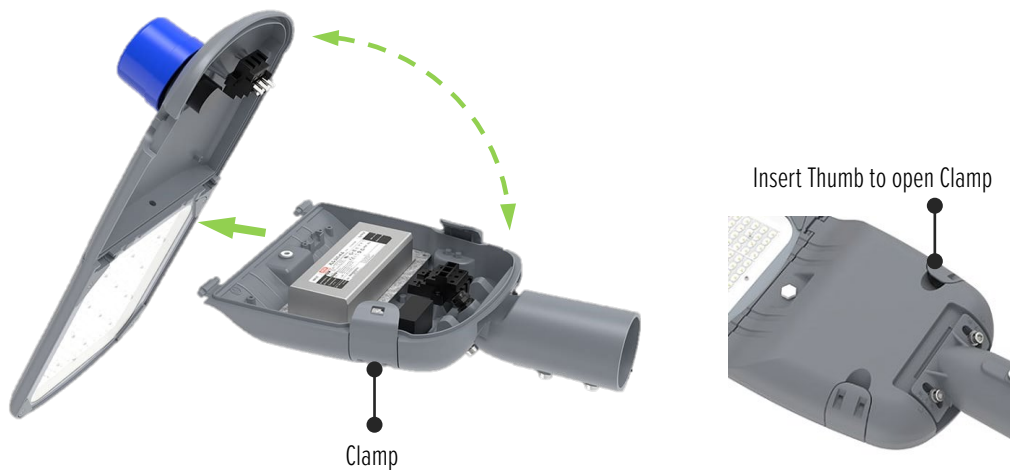
4. Final Check:

Ensure the lamp maintains its position and the screw is securely tightened.



Safety Reminder: Always ensure the power to the lamp is turned off when adjusting. If in doubt about any step, consult with a professional or the manufacturer's guide.





Opening the Lamp:

Locate the tool-free opening latches on both sides of the lamp.

Using your thumb, press down on the clamps until the latches are released and loosened.

Closing the Lamp:

Before closing, inspect and ensure the gasket is correctly positioned.

To secure the lamp, press down on the latches using the palm of your hand. Apply pressure until the latches clamp firmly into place.

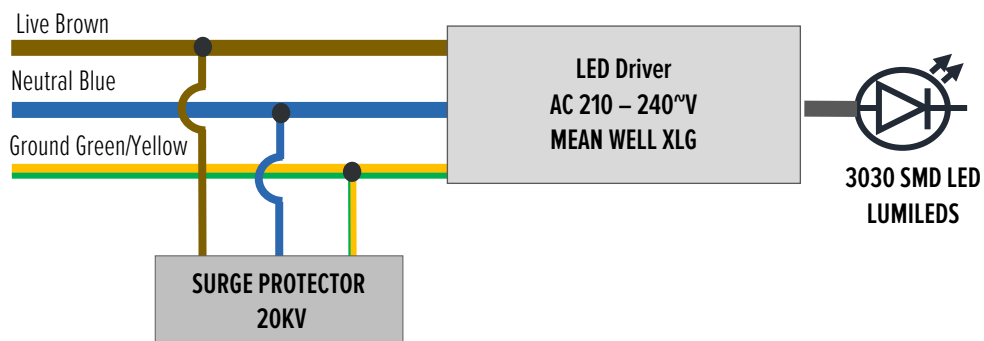


Safety Precautions:

Never open the lamp casing when it's wet or in damp conditions.

Always ensure the power is turned off before opening or adjusting the lamp.

For optimal performance and safety, always follow the manufacturer's guidelines and instructions. If unsure about any step, consult the user manual or a professional.





Getone

"Innovative Solutions"

If you have any technical questions or need assistance, please contact us:

Phone: +60 1777 5 7780

Email: support@getone.com.my

Address:

53, Jalan Bintang,
Taman Flora,
Batu Pahat 83000,
Johor, Malaysia.

We're here to help and ensure your experience is seamless. Don't hesitate to reach out!

Mede In Malaysia