



## LUXNUR LN-SUN Series

INTREGREATED LED SOLAR STREET LIGHTS

"Enhancing Roadway Beauty with  
Efficient Lighting"



Product of **GET ONE Sdn. Bhd.**

**Getone**  
INNOVATIVE SOLUTIONS



Designed and Manufactured in MALAYSIA



"Light Up Your **STREETS**,

The **LUXNUR** Way — Where Efficiency Meets Sustainability!"

## **24/7 Onsite Support**

Luxnur provides round-the-clock onsite support to ensure uninterrupted operation and prompt resolution of any issues, delivering peace of mind and exceptional service to our customers.

## **5 Years Warranty**

### **Easy to Install and Light Weight**

Luxnur products are designed for quick installation and feature a lightweight build, ensuring effortless setup and handling.

## **QUICK & FAST** Fault Replacement

Luxnur guarantees quick fault replacement, supported by our dedicated onsite support staff, ensuring minimal downtime and maximum reliability.

## **SMART CITY** Ready

Luxnur products are designed to seamlessly integrate with smart city infrastructure, enhancing urban living through advanced technology and connectivity

## **Production Capacity of 2000 Units a Month**

With a production capacity of 2000 units per month and our factory located in Batu Pahat, Luxnur is committed to delivering high-quality products on time





LUXNUR

LN-SUN-A Series

LN-SUN-A60 | LN-SUN-A100 | LN-SUN-A120

Designed for road beautification with high efficiency and superior lighting illumination, the LUXNUR Sun Series not only illuminates the roads but also enhances the overall appearance of the streets

5 Year Warranty



LUMINAIRE	Wattage	60W	100W	120W
	Lumen Output	12000Lm	20000 lm	24000 lm
	Lumen per Watt	198Lm/W		
	CRI	> Ra70		
	CCT	3000~6500K		
	Material	Aluminium Alloy		
	Fixture	1758*438*100MM	2018*618*150MM	2018*618*150MM
	Weight	28 kg*	32Kg	34kg
	Pole Diameter	55~65mm		
	Instal height	10 - 13M		
	Waterproof	IP67		
	Working Temp.	-20~65°C		
	SOLAR PANEL	Panel Type	Bifocal Monocrystalline PV	
Panel Wp.		34v125w1720*400mm	45V 220W 1980*580mm	45V 220W 1818*698mm
Charge Time		4.5hours		
Efficiency		23%		
CONTROLLER	Lighting Mode	100% Brightness 12 hours (80% DOD)		
	SMART IOT Controller	Optional		
	System Voltage	12V	24V	24V
BATTERY	Type	LiFePO4		
	Battery Capacity	1600 12.8V/125Ah	2600Wh 24V/110Ah	2560 Wh 25.6V /130Ah
	Days of Autonomy	2 days	2 days	2 days



LUXNUR

LN-SUN Series

JABATAN KERJA RAYA (JKR) SPECIFICATIONS

LN-SUN60 | LN-SUN80 | LN-SUN100 | LN-SUN120

Designed in accordance with JKR standards and specifications, the Luxnur Sun Series models have been thoroughly reviewed and approved by JKR. These lights prioritize agronomics and road safety, ensuring compliance with the ISO 13201-1 guidelines on the selection of lighting classes. The Luxnur Sun Series is engineered for easy installation and features a reduced weight compared to other lights on the market, making it a superior choice for road lighting solutions.

5 Year Warranty

LUMINAIRE	Wattage	80W	100W
	Lumen Output	11400Lm	19000 lm
	Lumen per Watt	210LM/W	
	CRI	> Ra70	
	CCT	2500 – 3500K (JKR Standard)	
	Material	Aluminium Alloy	
	Fixture	1758*438*100MM	2018*618*150MM
	Weight	28 kg*	38Kg
	Pole Diameter	55~65mm	
	Instal height	10 - 12M	
	Waterproof	IP67	
	Working Temp.	-20~65°C	
SOLAR PANEL	Panel Type	Bifocal Monocrystalline PV	
	Panel Wp.	34v125w1720*400mm	45V 220W 1980*580MM
	Charge Time	4.5hours	
	Efficiency	28% - 30%	
CONTROLLER	Lighting Mode	Programmed Light Damming 12 hours (80% DOD)	
	SMART IOT Controllor	Optional	
	System Voltage	24V	24V
BATTERY	Type	LiFeP04	
	Battery Capacity	25.6V/48AH	25.6V/160Ah
	Days of Autonomy	3days	3 days



# INTEGRATION WITH HD CCTV CAMERS

## Remote Managed CCTV CAMERS

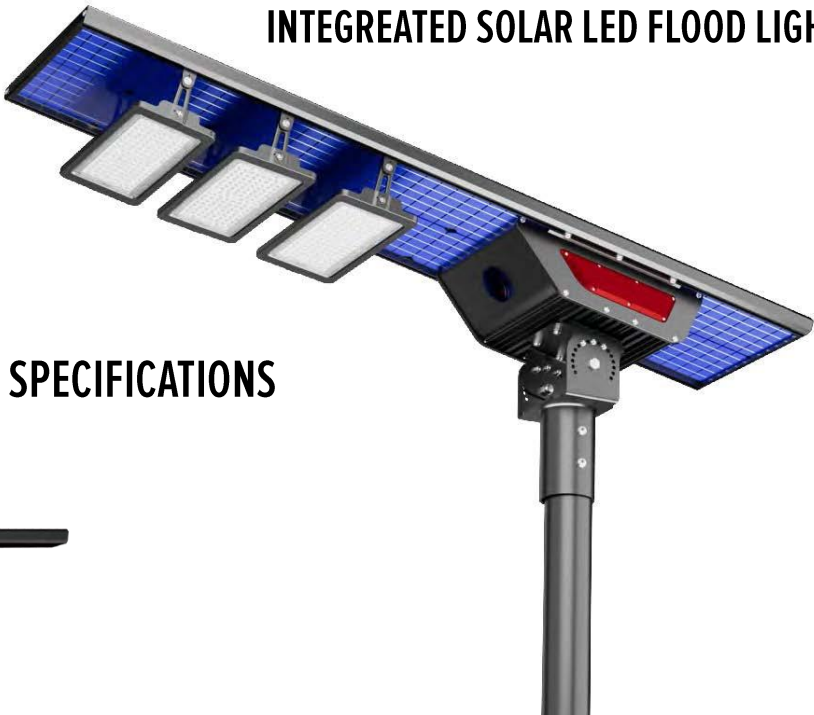


"Enhance your outdoor security with our integrated Solar Street Light featuring a wireless High Regulation AI tracking ready IP67-rated CCTV camera. Easily monitor and manage remotely for a safer environment."

\*Optional Feature



INTEGRATED SOLAR LED FLOOD LIGHT



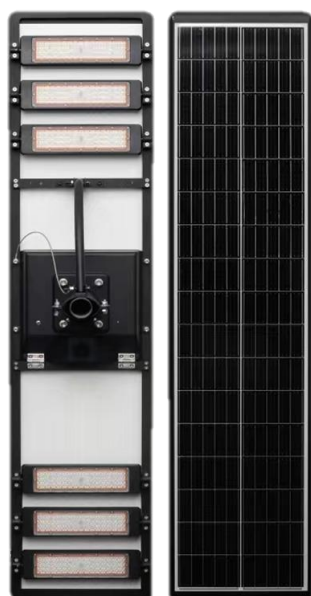
JABATAN KERJA RAYA (JKR) SPECIFICATIONS



LUMINAIRE	Wattage	60W	100W	120W
	Lumen Output	11400Lm	19000 lm	22800 lm
	Lumen per Watt	190LM/W		
	CRI	> Ra70		
	CCT	3000~6500K		
	Material	Aluminium Alloy		
	Fixture	1758*438*100MM	2018*618*150MM	2018*618*150MM
	Weight	28 kg*	38Kg	39kg
	Pole Diameter	55~65mm		
	Instal height	10 - 12M		
	Waterproof	IP67		
	Working Temp.	-20~65°C		
SOLAR PANEL	Panel Type	Bifocal Monocrystalline PV		
	Panel Wp.	34v125w1720*400mm	45V 220W 1980*580MM	45V 220W 1980*580MM
	Charge Time	4.5hours		
	Efficiency	28% - 30%		
CONTROLLER	Lighting Mode	Programmed Light Damming 12 hours (80% DOD)		
	SMART IOT Controller	Optional		
	System Voltage	12V	24V	24V
BATTERY	Type	LiFePO4		
	Battery Capacity	921wH – 12.8 72Ah	2304wH 25.6V/90Ah	2560 wH 25.6V 100Ah
	Days of Autonomy	2days	3 days	3 days

## JABATAN KERJA RAYA (JKR) SPECIFICATIONS

CUSTOMISABLE DESIGN



3 Meter

CUSTOMISABLE COLORE ANODIZARION

CUSTOMISABLE FEATURES



**LED Chip** SMD3030  
**Lumen Output** 23400Lm  
**Lumen /Watt** 195LM/W  
**CRI** > Ra70  
**CCT** 3000~4500K

**Controller** MPPT Wireless Zigbee  
**Battery** LiFeP04  
**Capaciry** Autonomy 3days  
**PV Panel** Bifocal  
**Repot Management** System



IP66 Extruded Aluminium  
Lamp body



High Luminous Efficiency  
190lm/W



Bi Focal PV Panel High  
Power Generation



Sensors for Dimming and  
On/Off



Designed for Safety and  
Beautifying Steet Lighting



Highly Efficient MPPT with  
Wireless Connectivity

**Adaptive Lighting** Automatically adjusts brightness based on real-time conditions and traffic flow.

**Energy Efficiency** Optimizes energy consumption by using AI algorithms to manage lighting schedules.

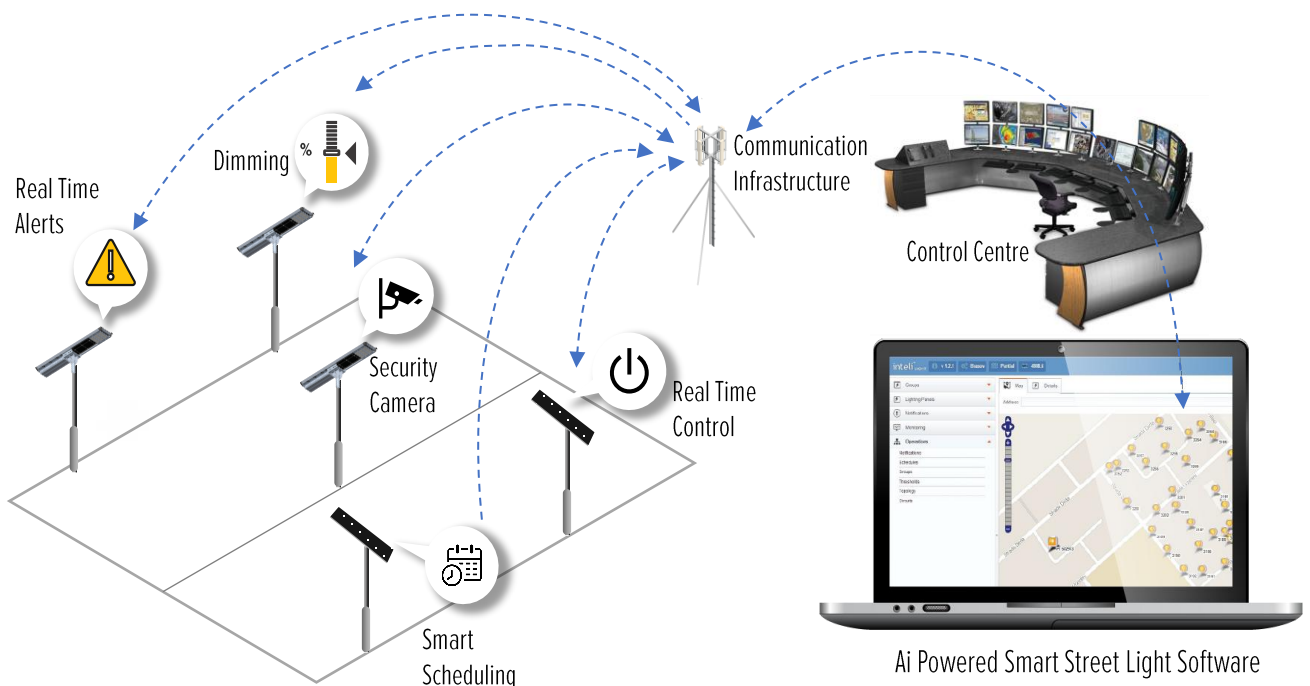
**Remote Monitoring** Provides real-time data and diagnostics for proactive maintenance and management.

**Predictive Maintenance** AI detects potential issues before they occur, minimizing downtime.

**Integrated Security** AI-driven cameras and sensors enhance public safety with intelligent surveillance.

**Smart Connectivity** Seamlessly integrates with other smart city systems for cohesive urban management.

## Customized and Highly Secured Network





**Getone**  
INNOVATIVE SOLUTIONS



"Download Luxnur Catalogue - Quick Access"

"Transform your community's nights with **LUXNUR** Solar Street Lights! Durable, eco-friendly, and designed for long-lasting performance, our Street Lights keep your areas illuminated for safety and security. Don't wait for change, create it. Install **LUXNUR** Solar Street Lights today and step into a brighter, greener future. Act now for a sustainable tomorrow!"

Discover the full potential of **LUXNUR** Solar Street Lights for your project needs. For detailed information on product features and to customize your solution,

For personalized service and inquiries about our products,  
contact us at : [sales@getone.com.my](mailto:sales@getone.com.my).

[www.getone.com.my](http://www.getone.com.my)

© Get One Sdn. Bhd. All rights reserved.